

*72nd National Women's Conference  
March 9 - 16, 2025*

*Embrace Diversity  
in Christ*



*For by Him all things were created  
in heaven and on earth.  
Colossians 1:16-17*

*HE MADE US ALL OF  
Value To HIM*



# Greetings

*Welcome to the 72nd National Women's Conference. We are thankful that God continues to extend His grace and mercy to us until this day. We thank God for blessing our Pastor, Bishop Omega to celebrate his 66th birthday and his 33rd wedding anniversary with his beloved wife, Lady Donna.*

*We thank God for all of us who continue to press our way to be a part of this great National Women's Conference experience. The highlight of the Conference will be the Word of God preached by Bishop Omega on Sunday, March 9, 2025, and Sunday, March 16, 2025, at our Headquarters location at 701 South 22nd Street, Philadelphia, PA 19146.*

*Please refer to this brochure as a guide for all Conference information. Should you have questions or concerns, please contact a member of the National Women's Department team.*

*We love you and welcome you in unity, peace and joy as we enjoy the fellowship of the sisterhood and most importantly, the Word of God. May God richly bless you and your families according to His gracious will.*



*National Women's Department Leadership Team*  
**CHURCH OF THE LORD JESUS CHRIST**



*If you are not a registered hotel guest and not attending a session, feel free to use Room 110, to catch up, commune and engage with other attendees, rather than using the hotel lobby.*

*Masks are optional throughout the Conference week, both at the Desmond Hotel and during Church services, however, Covid and many other transferable viruses still prevail. Therefore, if you are feeling ill, or have not taken advantage of some of the measures that reduce your chances of transmitting to others, please consider the health of others and wear a mask.*

**THE DESMOND**  
MALVERN  
A DOUBLETREE BY HILTON

# 2025 National Women's Conference

March 9 -16, 2025



1 LIBERTY BLVD, MALVERN, PA 19355 • 800-575-1776 • 610-296-9800

## TREASURES IN THE MALVERN COMMUNITY



**PNC**

*Wegmans*



**Wawa**





# PARKING FOR NATIONAL WOMEN'S CONFERENCE

University of Pennsylvania's Impark Garage

1740 South Street (near the corner of 18th and South)

\$6.00 per vehicle with the proper validation at the Registration Table

Pick-up by Church Shuttle beginning 8:30 AM every 15 minutes

until 10:45 AM, and returning every 15 minutes following dismissal until 3:30 PM (both Sundays)

We recommend that drivers drop off their passengers at the church first, then park at the garage and take the shuttle back

## NWC REGISTRATION TABLE HOURS OF OPERATION

### **SATURDAY, MARCH 8**

*The Desmond 5:00 PM - 7:00 PM*

### **SUNDAY, MARCH 9 - CLJC 9:00 AM - 10:30 AM**

*Open for Business after Service on The Square until 2:30 PM*

*The Desmond -5:00 PM - 7:00 PM*

### **MONDAY, MARCH 10 to FRIDAY, MARCH 14**

*The Desmond 9:00 AM - 6:00 PM*

### **SATURDAY, MARCH 15**

*The Desmond 10:00 AM - 11:00 AM*

*3:00 PM - 5:00 PM*

### **SUNDAY, MARCH 16**

*CLJC 9:00 AM - 10:30 AM*

*Open for Business after service on The Square until 4:00 PM*

*Anyone arriving during the times the Registration table is not open,  
please contact Latonya Thomas (267-982-8536),*

*Yolanda Morgan-Wells (267-836-8039) or*

*Ruth Smith (215-847-8656)*

# SUNDAY - MARCH 9, 2025

Daylight Savings Time Today

WORSHIP SERVICE: 11:00 AM  
HOSTED BY THE CHURCH OF THE LORD JESUS CHRIST  
701 S. 22nd Street • Philadelphia, PA 19146

Welcome to our Sunday service! We are excited to gather for the 72nd National Women's Conference, where we embrace the incredible diversity in Christ and recognize the inherent value each of us holds in His eyes. Today, we'll hear from Bishop Omega, whose inspiring message will uplift and challenge us all.

This year's conference is designed to explore powerful themes of healing, resilience, and enrichment. We will delve into the journey of recovery from loss, the importance of holistic well-being, and the strength found in sharing our personal stories. Additionally, we will celebrate our rich cultural diversity and examine critical social issues, all while fostering a supportive sisterhood that uplifts and inspires.



For more information on the conference activities and to stay updated on all our upcoming events, please visit us at [www.tcljc.com](http://www.tcljc.com). Thank you for being here today, and may this experience inspire you on your journey!

**DEADLINE FOR PAYMENTS FOR MEALS AND ACTIVITIES AT THE HOST HOTEL MAY BE MADE IN PERSON IN PHILADELPHIA NO LATER THAN SUNDAY, MARCH 9, 2025, OPENING DAY OF THE CONFERENCE.**

Unity Color of the Day for Ladies: White & Lavender



**BE SURE TO ORDER YOUR DELICIOUS "TO GO" MEAL BEFORE SERVICE STARTS!**

**VEGAN OPTIONS AVAILABLE UPON REQUEST!**

March 9, 2025 (directly after service)	
<b>SALADS</b>	
Assorted Salads	
<b>MEATS</b>	
ALL DINNERS COME WITH TWO SIDES	
Fried Chicken	\$16.00
Baked Chicken	\$16.00
Fried Fish	\$18.00
Meatloaf	\$18.00
<b>SIDES</b>	
ALL ADDITIONAL SIDES	\$ 4.00
Macaroni & Cheese	
Mashed Potatoes	
Rice & Gravy	
Candied Yams	
Broccoli	
Green Beans	
<b>BREADS</b>	
Homemade Rolls	\$ 1.00
Cornbread	\$ 1.00
<b>DRINKS</b>	
Assorted Drinks	\$ 3.00
Bottled Water	\$ 1.00
HOMEMADE DESSERTS AVAILABLE	

**EXTRA  
ACTIVITIES!**

See this award-winning classic on the stage!

# A Raisin in the Sun

*The pivotal drama that "changed American theatre forever"*

**Sunday, March 9, 2025 7:00 PM Play Cost: \$45**

(Includes transportation • Van departs 6 PM from The Desmond Hotel)

Must purchase "a la Carte". Not included in package plans.

Limited tickets available online through the [CLJC website](#).



By Lorraine Hansberry



Directed by Steve H. Broadnax III  
Leonard C. Haas Stage



People's  
Light

People's Light Theatre 39 Conestoga Road, Malvern PA 19355 •

"Company Artists Melanye Finister (Lettie, Skeleton Crew) and Eric B. Robinson Jr. (Bonez, Mud Row) lead a stellar ensemble in this award-winning classic. Simultaneously intimate and mythic in scope, Lorraine Hansberry's pivotal drama "changed American theatre forever" (*The New York Times*). Three generations of the Younger family share a cramped apartment on the segregated South Side of 1950s Chicago. The late Mr. Younger's life insurance policy could mean a fresh start, but disputes surrounding how to spend the money reveal deep generational divides." •



**14 MARCH 2025 | LIVE AT 8PM**

LIVE! CASINO & HOTEL PHILADELPHIA  
900 PACKER AVENUE  
PHILADELPHIA, PA 19148

This event is **NOT** included in the Women's Conference package plans or a la carte options and must be purchased through the **venue**.

MONDAY - MARCH 10, 2025

*THE RESIDUE OF DOMESTIC VIOLENCE  
THERE IS LIGHT AT THE END OF THE TUNNEL*

*10AM - 12 Noon*

*\$60 includes morning & afternoon sessions plus lunch*

What is life like after an intimate partner violation, including domestic violence? Survivors do not have to be defined by this dreadful experience. We can break the cycle of abuse and end negative behaviors and generational patterns. Learn from those who have personal experience, and join the conversation about intimate partner violence and the long-lasting impact on individuals and communities. Whether you've experienced this violence or not, let us come together to see how we can support survivors. God has made us all of value to Him. Consequently, we all deserve to be treated with dignity and respect. **Wear something purple to show solidarity for this event.**



*2PM - 4PM*

We will have the opportunity to look at domestic violence in real time, dissect the issues at hand and offer solutions. Our facilitator, E. Marie Hall, is a person who has had deeply personal, multiple experiences, and has taken impactful steps towards deterrence. We will present a survivor's story, challenging the audience to explore ways in which we can help our sister, as well as other survivor experiences. This afternoon's session will also focus on enlightening the audience about laws that protect victims, as well as resources and services available.





**TUESDAY - MARCH 11, 2025**

***NEVER JUDGE A BOOK BY ITS COVER***

***10AM - 12 Noon \$60 includes morning and afternoon sessions plus lunch  
Books will be available for sale during the event.***



Sharon Kelly Hake, founder of the “Great Dames” organization, a global community of women committed to discovery, empowerment, and good work, recently released a book titled “Great Dames”, a collection of 52 relatable true short stories of women’s struggles and triumphs, including one of our own members! A small panel of co-authors will join the Conference, sharing family values, overcoming sexual assault, validating that there is the possibility of a good life after serving prison time, and more. Come join us for an enlightened session of testimonials of heart wrenching experiences, and pivotal moments of support and bonding.

***2PM - 4PM***

***“ASCENSION” WITH DR. LOIS BENJAMIN***

***Books will be available for sale during the event.***

In this newly released book and masterful work of family-focused sociology, Dr. Lois Benjamin considers the lives of Pennie and Roscoe James and their 12 children, revealing how a large, close-knit family with humble origins in a small town of North Carolina is shaped by the contours of its religious and ethical value system. Come meet the author and the family! It’s a discussion of how this intimately detailed story has impacted their lives. Enjoy a trip down memory lane with this family strongly rooted in love, kindness, and humor. You will come to appreciate an American Family’s Generational Journey.



***EVENING (7PM - 9PM) - AMPHITHEATER 3RD FLOOR  
PHILADELPHIA DISTRICT SISTERS’ CIRCLE LIVE***

In lieu of a separate District visit as the National Women’s Department Leadership Team has done with the other Districts, the Philadelphia visit will take place during the National Women’s Conference. All Philadelphia sisters are encouraged to attend, bringing an open mind, thoughts, concerns, creativity, and positive input to prepare the Women’s Department for future generations. There is no charge for this private session.

# WEDNESDAY - MARCH 12, 2025

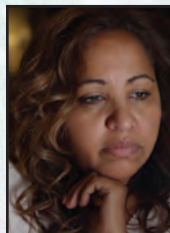
## ACKNOWLEDGING DELICATE LOSS

*\$60 includes morning and afternoon sessions plus lunch*

*10AM - 12 Noon*



By the time women reach adulthood, most have experienced some type of personal loss. Whether a delicate loss as a result of a miscarriage, stillborn birth, or SIDS (Sudden Infant Death Syndrome); a woman can lose herself and her normalcy due to menopause, trauma, and reduction in her quality of life due to cancer or other health issues. Loss sometimes



creates deep emotional wounds that require the process of grieving to heal. I see you, I hear you, you are not alone . . . let's acknowledge, share and talk about it! Dr. Stephanie Langsam, Chief of Obstetrics and Gynecology, from the Main Line Health Care system is scheduled to facilitate this segment.

*2PM - 4PM*

In a roundtable environment, we will discuss scenarios and engage in activities covering delicate losses unique to women. It's an opportunity for us to share and offer validation, affirmation and empathy for one another and to acknowledge the value within ourselves. Together, let's embrace the great healing power of simply feeling accepted and affirmed by each other. Validation is a powerful gift to give! **"Relax, Breathe, Stretch and Release."** Did you know that even minimal exercise daily is beneficial to the mind (mental), body (physical) and soul's (emotional) well-being? Join us in a series of low-impact activities performed while sitting, dressed comfortably in your chair! These activities are designed for participants of all ages and accommodate most physical limitations. Come on ladies, let's get our blood flowing as we relieve stress and tension, and learn to just BREATHE!

*Mary Ann Hughes*



*EVENING - 7PM - 9PM (No Charge to Enter)*

*P.I.E.S. (Circle of Life Game)*

How much time do you devote to self-care, self-validation and recognizing the value Christ has in you? How do you prioritize the activities/events of your daily life? Is the lack of self-care and "me" time affecting how well you're able to navigate through difficult times and grieving from a loss? Won't you join us in this self-defining activity? You won't leave hungry! Come and have a slice of real PIE too!

## ***THE AMAZING GIVING HUMAN BEING***

***\$60 includes morning and afternoon sessions plus lunch***

*Note: These two sessions serve as awareness on this sensitive topic and are not an endorsement or opposition from the church organization.*

### ***10AM - 12 Noon***



The human body is a marvel of nature from God. What would be your reaction if your doctor said, “you need an organ transplant in order to survive.”? After recovering from the shock of hearing a new reality, you may learn that vital organs like our heart, kidneys, eyes, liver and more, work in harmony to sustain life. Our organs can be impacted by years of medications, poor diet, and other substances. Come see, hear and learn as

the experts from the Gift of Life Donor program share the background of donations and transplantation. Understand what qualifies a patient for the waitlist, the multi-layered process, barriers to donation, and volunteer ambassadors. Listen to the personal experiences from the perspective of an organ recipient, a donor family member, a patient waiting for a transplant, and the after care processes. You will learn of the intricacies of the human body, and benefits of organ and tissue donations, as an option to continue a quality life after a serious diagnosis.

### ***2PM - 4PM***

Through the selfless acts of donors, the lives of recipients are transformed daily across the globe. The human body stands as a testament to resilience and complexity, where organ and tissue donation can be a lifeline to those in need of medical miracles. Hear from a few donors and recipients that have benefited from the gift of organ donation, including Russell Gutrick, a heart transplant recipient. Learn the truths and myths of organ and tissue donation. At the end of the session, for those who are interested, there will be instructions available about how to become a donor.



### ***5PM - SPECIAL PRIVATE SESSION FOR DISTRICT WOMEN’S SUPERVISORS***

#### ***What Has Your Cup Full?***

This session is designed exclusively for the Women’s District leaders to interact freely with the National Women’s leaders to share accomplishments, express concerns, ideas, cross-district successes, visions for your District, and the support you need to achieve those goals. It can also be a time for you to voice distractions that may be impeding your progress as a leader. This gathering does not replace the Saturday morning meeting with both District and Local Women’s Supervisors and their Assistants at 10AM.



# FRIDAY - MARCH 14, 2025

## RHYTHMIC ROOTS

**\$60 includes morning and afternoon sessions plus lunch  
10AM -12 Noon**



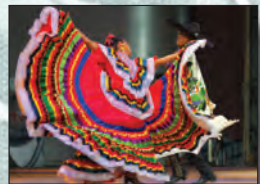
After four days of enlightenment, and “Tug at your heartstring” subjects, Friday aims to educate and entertain. Rhythmic Roots is designed to encourage, embrace, and enjoy other cultures’ music and dance heritage. Attendees will learn about music, dance styles and their shared similar historical backgrounds. The attendees will leave having expanded their horizons by stepping out of their entertainment comfort zone

leading to a deeper appreciation of God’s complexity. Dress in Cultural Attire for both sessions, if you desire, but the afternoon session is the Cultural Costume Showcase. Attendees, please see the list below of assigned continents to represent during the sessions. In the first session, we will explore the history of music styles from various cultures. Music can form bonds between people from different cultures. Whether through performing, singing, or jamming on instruments, music has the power to bridge language barriers and connect with the listeners. Sit back and enjoy a video presentation titled: “Rhythmic Roots”. After the video, attendees can win prizes by playing a fun and upbeat game. Then, it’s time to clap your hands and tap your feet to a live performance by a local artist in Spanish and English. This fusion between Latin and urban rhythms creates the perfect vibe. Smashing beats and lively vocals will make it impossible not to dance or tap your feet.



**2PM - 4PM - Cultural Costume Showcase**

Have you ever admired another country’s cultural attire? Come with us! Let’s play dress-up! Just imagine (for example) the beautiful Chinese kimono, African dashiki, American Cowgirl outfit, Egyptian kaftan, and the Indian sari dress, celebrating diversity in style altogether during this event. Here is a chance to adorn yourself in your assigned cultural attire for the afternoon where we will dress to impress! A prize can be won by the person sporting the most creative attire. This bash will be your chance to embark on a journey filled with music, dancing, and much more.



**Paired Districts/Regions and their Assigned Continents:**

**Florida/Georgia - South America • MD/DC/DE/New England - Asia**

**North Central/Philadelphia - North America**

**11. South Central/The Carolinas - Africa • Virginia/Western States - Europe**

# SATURDAY - MARCH 15, 2025

*10 AM - 12 Noon*

Annual leadership meeting of Local and District Women's Supervisors and their Assistants in the 3rd Floor Amphitheater

**SATURDAY MAIN EVENT**  
**DIAMONDS AND PEARLS BANQUET - \$130**  
**HORS D'OEUVRES AND CASH BEVERAGES - 4PM**  
**DESMOND GRAND BALLROOM - 5PM**



In true Women's Conference style and charm, this event will be another to remember. Enjoy dinner, entertainment, dancing, and special tributes to our Pastor's lovely wife, Lady Donna Marie Shelton, as she completes her Diamond Jubilee year. He could not have the same natural place of

reprieve without the love and support of his wife faithfully at his side. Let us together, celebrate this special jewel among us in the final days of her 60th year. Ladies, feel free to adorn yourselves with diamonds and pearls, real or re-imagined. Sherry Wilson Butler and the Aaron Graves Quintet will be the primary entertainment for the evening.



72nd National Women's Conference

MARCH 9-16, 2025

For by whom all things were created  
all things stand and exist.  
Colossians 1:16-17

Embrace Diversity in Christ

HE MADE US ALL OF VALUE TO HIM

Saturday, March 15, 2025 • The Desmond Hotel Malvern, 1 Liberty Blvd., Malvern PA 19355

## SATURDAY EVENT



In true Women's Conference style and charm, this event will be another to remember. Enjoy dinner, entertainment, dancing, and special tributes to our Pastor's lovely wife, *Lady Donna Marie Shelton*, as she completes her *Diamond Jubilee Year*. We appreciate the love and support of Bishop Omega's wife who has been faithfully at his side. Let us together, celebrate this special jewel as her 60th birthday year concludes. Ladies, feel free to adorn yourselves with diamonds and pearls, real or reimagined.

# DIAMONDS & Pearls

## BANQUET

Featured Entertainment: Sherry Wilson Butler and the Aaron Graves Quintet

MARCH 15, 2025 | 5 PM | COST \$130

DESMOND HOTEL GRAND BALLROOM

DRESSY ATTIRE

# SUNDAY - MARCH 16, 2025

Hosted by the Church of the Lord Jesus Christ  
 701 S. 22nd Street • Philadelphia, PA 19146  
 Worship Service: 11:00 AM



As we bring the 72nd National Women's Conference to a close, we hope you have gained valuable insights and inspiration from this week's activities. It has been a time of learning, connection, growth, and we are grateful for your participation.

We invite you to join us for the final message from Bishop Omega, whose words will undoubtedly resonate and uplift your spirit. This concluding moment brings together the many themes we explored throughout the week—from resilience and healing to celebrating our shared and unique experiences. It is an opportunity to reflect on the connections we have formed, the personal stories shared, and the lessons we've gained. We will carry them forward as reminders of Christ's love and unity.



As you leave today, remember that you are part of a lasting sisterhood that honors and supports each individual's unique journey in Christ, strengthening one another as we continue to grow.

Thank you for being part of this transformative journey. We encourage you to stay connected with our community and continue exploring the themes we've discussed. For ongoing support and inspiration, please reach out to our 24-hour phone line at 1-425-585-1806, Option 2, to hear weekly sermons.

We look forward to seeing you again next year as we continue to embrace our diversity in Christ and affirm the value we each possess in His love.

## ANNUAL MARCH \$15.00

Unity Color of the Day for Ladies:  
 White & Mint Green



<b>SALADS</b>	
Assorted Salads	
<b>MEATS</b>	
ALL DINNERS COME WITH TWO SIDES	
Fried Chicken	\$16.00
Baked Chicken	\$16.00
Fried Fish	\$18.00
Turkey Wings	\$20.00
Ribs	\$20.00
<b>SIDES</b>	
ALL ADDITIONAL SIDES \$ 4.00	
Macaroni & Cheese	
Yellow/White Rice (& Gravy)	
Candied Yams	
Cabbage	
Mixed Greens (Kale & Collards)	
<b>BREADS</b>	
Homemade Rolls	\$ 1.00
Cornbread	\$ 1.00
<b>DRINKS</b>	
Assorted Drinks	\$ 3.00
Bottled Water	\$ 1.00
HOMEMADE DESSERTS AVAILABLE	

**BE SURE TO  
 ORDER YOUR  
 DELICIOUS  
 "TO GO" MEAL  
 BEFORE  
 SERVICE  
 STARTS!**

**VEGAN OPTIONS  
 AVAILABLE  
 UPON  
 REQUEST!**

# National Women's Department

## *Our Vision, Mission & Values*

**VISION:** To structure the National Women's Department, shaping our present and future, by engaging, training, and supporting women in our organization.

**MISSION:** The National Women's Department mission is to support and develop women, particularly ages 36 and above, promote unity, build, and sustain viable internal/ external partnerships, support the church ministry, and supplement The Administration financially.

**VALUES:** Spiritual Growth, Integrity, Accountability, Respect, Inclusion, Discretion, Kindness, and Creativity.





# MEMORABILIA

\$25.00

Enjoy this  
Weekender Duffel Bag,  
sporting the Globe,  
encouraging owners to  
**LOOK AROUND  
THE WORLD**  
and  
**EMBRACE DIVERSITY  
IN CHRIST**



## INTRODUCING **THE ULTIMATE KITCHEN BUNDLE!**

Join us in supporting the National Women's  
Department fundraiser by purchasing our exclusive  
kitchen bundle, featuring three essential items:

**KITCHEN MITTEN | POT HOLDER | KITCHEN TOWEL**

~~Bundle Price: \$30~~

**CONFERENCE  
SPECIAL  
\$25**

### Why Buy Our Bundle?

- Support a great cause with every purchase
- High-quality kitchen essentials
- Enjoy free shipping on your order



# 701 RECORDS

Bishop Omega's 66<sup>th</sup> Birthday  
Celebration

## Evening of Testimony & Fellowship

JANUARY 25, 2025

Online: [www.701Recordsshop.com](http://www.701Recordsshop.com)  
Available for purchase Thursday & Friday 12PM – 4PM

DVD \$15 CD \$10

Available Thursday and Friday at the Desmond Hotel

## 2025 VENDORS



- *Carole's Oil, Incense, and more, LLC*
- *Sweet Pea*
- *All Things Transportation*
- *COTHLife Global, LLC*
- *Destiny's Fashion Connection*
- *Touch of Color*
- *7 Sista's Unique Jewelry*
- *UTA Gifts and Sports Items*

# *In Loving Memory*

MARCH 2024 - FEBRUARY 2025

*For the women who have passed on since the last  
Women's Conference:*

*You can shed a tear that they are gone  
Or you can smile because they have lived  
Your heart can be empty because you cannot see them  
Or you can be full of love that you've shared  
You can remember them, and only that they are gone  
Or you can cherish the many memories and let them live on*

*Thank God for the dear sisters who have worshipped with us over the  
years, and may God continue to grant us the joy of the beautiful  
imprint they have left us to cherish.*

## **THE CAROLINAS DISTRICT**

*Mother Bernice Wilson  
Mother Virginia Weaver  
Sister Carolyn Brattain  
Sister Debra Farmer  
Sister Evelyn Belton  
Sister Patricia Sellars  
Sister Wanda Melvin*

## **FLORIDA DISTRICT**

*Sister Alisa Currington*

## **GEORGIA DISTRICT**

*Sister Lauren Swasey*

## **MD-DC-DE DISTRICT**

*Sister April Hegens  
Sister Carolyn Swann  
Sister Gladys Byrd  
Mother Ruth Grant  
Sister Shirley Tolson  
Sister Thelma Harvey*

## **NEW ENGLAND DISTRICT**

*Mother Elmina Scott  
Sister Yvonne Hodges*

## **NORTH CENTRAL DISTRICT**

*Mother Allela Bledsoe  
Mother Johnnie Mae Burt  
Mother Vera Reeves  
Sister Gurline Jones  
Mother Shirley Chisholm*

## **PHILADELPHIA DISTRICT**

*Mother Janie Jamison  
Sister Cynthia Taylor Miller  
Sister Darlene Terri Washington  
Sister Mary McGee Moore  
Sister Willa Mae Foster*

## **SOUTH CENTRAL DISTRICT**

*Sister Bavarian Coleman  
Sister Lakesha Cooper*

## **VIRGINIA DISTRICT**

*Mother Alice Stepherson  
Sister Alice Walden  
Mother Doris Greene  
Mother Lillie Elizabeth Jones  
Sister Maxine Parker-Smith  
Sister Mildred Burke  
Mother Minnie Holly*

2025

# NATIONAL WOMEN'S CONFERENCE PLANNING TEAM

*MOST HONORABLE CONSULTANT.....LADY DONNA M. SHELTON*  
*CO-NATIONAL WOMEN'S SUPERVISORS.....LADY VELADA WALLER*  
*DAME JOYCE HOLLOWAY*  
*ASSISTANTS TO THE NATIONAL LEADERS.....SISTER WENDY GUTRICK-SMITH*  
*SISTER RAMONA FARROW*

**CORE TEAM PLANNERS:**

**MONDAY**

*SISTERS JENINE HOLLOWAY AND VONDA BLAKE*

**TUESDAY**

*DAME MARY HAYNES AND SISTER MONICA LANE*

**WEDNESDAY**

*SISTERS CATHY WORSLEY AND LINDA PYATT*

**THURSDAY**

*SISTERS AMELIA BAILEY AND CAROLYN STENNETT*

**FRIDAY**

*SISTERS ADA RAMSEY AND ANGELA SMITH*



*SENIOR ADVISOR.....DAME PATRICIA RUSSELL*  
*DIRECTOR OF FINANCE.....SISTER ANGELA ARTIS*  
*FINANCE APPRENTICES.....SISTER YOLANDA MORGAN-WELLS*  
*SISTER MELISSA SPEARMAN & SISTER EVERLENE OWENS*

*MARKETING LEAD.....SISTER SHARON GREEN*  
*MEMORABILIA.....MOTHER PATRICIA STRICKLAND*  
*REGISTRATION LEAD.....SISTER LATONYA THOMAS*  
*WEBPAGE.....SISTER MELINDA RIJOS*



**MANY THANKS TO THE MARKETING, REGISTRATION, TDI, AND  
TRANSPORTATION TEAMS FOR THEIR CONTINUED SUPPORT!**

**SPONSORED BY CHURCH OF THE LORD JESUS CHRIST**

**701 S. 22ND STREET - PHILADELPHIA, PA 19146**

**PHONE: (215) 735-8982**

**FAX: (215) 735-4287**

**WWW.TCLJC.COM**

**BISHOP OMEGA**

**PASTOR AND GENERAL OVERSEER**

